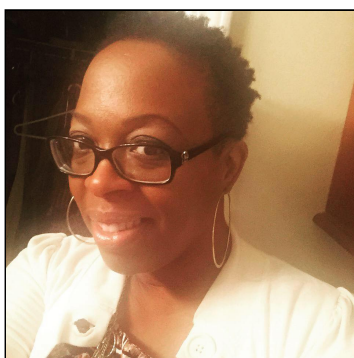


Georgia Tech  School of
Materials Science
and Engineering

MSE

undergrad news
November 2016



We are in the midst of Phase I Registration and there have been a few hiccups along the way. If you are receiving an error message when trying to register for a non-major course, you may need to request a permit to register. You will probably have to wait until Phase II, when more seats become available. Another reason could be that you don't have the required prereqs. Please check on [OSCAR](#) to see the required prereqs, then review your Degree Works page to see if you have them. Unfortunately, MSE cannot issue Permits/Overloads for outside courses. If you can't get into a class during Phase I, try again during Phase II Registration. The maximum hours you can register for during Phase I is 18 hours. You can pick up additional hours during Phase II if needed.

Shirley Manchester
Undergraduate Academic Advisor



Thanksgiving Break

No School

November 23 -25

Need to declare a concentration?

Declaring a concentration should be done by the beginning of junior year and is required to graduate.

It's easy. [Here's how.](#)



Registration

- Phase I Registration will end Nov. 18 at 4:00 pm ET
- Phase II Registration will run from Jan. 5-13 for Spring 2017 term

MSE Permit Requests: Please include the following with your requests:

- Name
- Tech ID number
- Course name / number / CRN# / section number
- Request explanation

If you've received an error message when trying to register for a MSE class although you're an MSE major it might be due to:

- Missing prerequisites
- Still showing as outside major (Change of Major form not processed)
- Overload error - the class is full

Explanation and instructions will be given once you've submitted your requests/inquiry to registration@mse.gatech.edu.

Mandatory MSE Ethics Requirement!

There is a mandatory Ethics requirement for the MSE degree. These course options are different than the GT Ethics course options shown in the GT catalog. **SENIORS**, please check your DegreeWorks page via [Buzzport](#) to see if you have met this requirement. If not, and you're planning to graduate Spring 2017, you will need to pick up a course before the end of Phase II Registration (January 13, 2017).



The MSE Ethics course options are listed in your **Degree Works** page under **Core Area "F"** and are as follows: CS, 4001, 4002, PHIL 3105, PHIL 3109, PHIL 3127, PHIL 4176; HTS 1084, HTS 3032; INTA 2030; LCC 3318 or PUBP 3600.

Courses HTS 2084, HTS 3032, INTA 2030 & PUBP 3600 can be used to satisfy multiple requirements.

See social sciences course listing [here](#).

Scroll to the bottom of page to see the color options to know how to choose your course(s).

See humanities course listing [here](#).



Fall Commencement

December 17, 2016 – 9:00 – 11:30 a.m.

Purchase regalia [here](#).

Georgia Tech will provide honor cords for undergraduate students based on their previous semester's cumulative GPA. Students will receive an email with pickup instructions.

Graduates are permitted to wear additional items if given by officially sanctioned Georgia Tech honor societies or student organizations. Degree Candidates are responsible for obtaining from the student organization any honors accessories to which they are entitled. GPA Requirement with a minimum of 60 institutional credits earned:

- 3.15 for HONOR (double white cords)
- 3.35 for HIGH HONOR (double gold cords)
- 3.55 for HIGHEST HONOR (double white and gold braided cords)

Ticket Distribution: Nov. 7-18. Tickets are required for the Bachelor's ceremony

If you have any questions, please contact [Luis Ocasio](#), 404-385-7636.

Curious about global internships?

Check out the opportunities [here](#).



Interested in undergraduate research?

- Create or update your resume
-



- Email your resume to [Renita Washington](#) and let her know you are interested in research - she will distribute it to the MSE faculty
- If you know who you'd like to work with, you can contact the faculty member directly. [Faculty contact information.](#)

[Undergraduate Research Opportunities Program](#) (UROP)
Ga Tech's structured and official process Undergraduate Research Program

Undergraduate research is not limited to MSE.



International Education Week

November 14 -17

Events held all week!

Paid International Internship Webinar

IAESTE Webinar

Tues. November 15, 4:00 – 5:30pm
Savant Building, Room 308

For more information [email](#).

Global Internship Advisor: [Allison Noffsinger](#).



Career Fairs

[National Black MBA Virtual Career Fair](#) (online)
November 14, 2:00pm - 5:00pm

[Bender Virtual Career Fair](#) (online)
Where Job Seekers with Disabilities Meet
Employers Across the Nation.

Upcoming company information sessions

[Click here](#)



Resources & Links

[Academic Coaching](#)

[Counseling Services](#)

[Tutoring Services](#)

[Community Service Information](#)

Don't forget to backup your data to external entities like the Cloud, portable hard drive, USB, etc.



Upcoming Events

Undergraduate Academic Advising Team:

[Dr. Mary Lynn Reaff](#)

Associate Chair,
Undergraduate Program
404.894.2496

[Renita Washington](#)

Academic Advising and Program Mgr.
Walk-ins and appointments
404.894.2852
Love Building, Room 294

[Shirley Manchester](#)

Academic Advisor II
Walk-ins and appointments

[Sarah Johnson](#)

Enrollment Manager,
Undergraduate Program

404.894.2850
Love Building, Room 296

404.894.2430
Love Building, Room 290



Facebook YouTube Website

Copyright © 2016 MSE at Georgia Tech, All rights reserved.

Our mailing address is:

Georgia Institute of Technology
School of Materials Science and Engineering
771 Ferst Drive
Atlanta, Ga 30332-0245

[unsubscribe from this list](#) [update subscription preferences](#)
